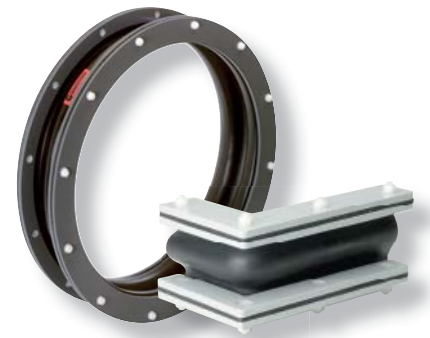


WILLBRANDT Rubber Expansion Joint Type 64

The type 64 expansion joint is a flexible expansion joint made from pre-formed sheets and is vulcanised or heated into its final form, depending on the material. The dimensions of the expansion joint are based on the construction dimensions and the required movement absorption. There are no standard dimensions for this particular type.

Application areas include stress-free installation of fans and blowers, the bulk handling and materials handling.



Bellow design	The expansion joint bellows comprise a layer of rubber sheeting with a fabric section that overlaps in the area of impact and is vulcanised or heated. There are corrugated and uncorrugated versions in order to absorb the prescribed movements.	Fixing	Both flange connection and cylindrical ends for fixing clamps possible.
Pressure resistance	Max. +/-0.4 bar (also dependent on the free installation length)	Accessories	<ul style="list-style-type: none"> - Potential equalisation - Guide sleeves - Dust and splash protection covers - Earth cover / sun protection hoods

Specifications

Bellow		Bellow design			Thickness mm	max. temperature °C	max. pressure		Version
Colour code	Colour marking	Core (inner)	Reinforcement	Cover (outer)			bar	bar	
red		EPDM	Polyamide	EPDM	3.0	120	-0.4	+0.4	Soft
red		EPDM	Polyamide	EPDM	4.0	120	-0.4	+0.4	Standard
lilac*		FPM	Polyamide	FPM	4.0	200	-0.4	+0.4	Standard
yellow		NBR	Polyamide	NBR	4.0	90	-0.4	+0.4	Standard
grey		CR		CR	3.0	90	-0.4	+0.4	Standard

* Only without convolution (bellow profiles type 64-2 and type 64-4).

Application

Type 64 red

For hot and cold air and bulk materials. Good resistance to weather, ageing and ozone. Not suitable for oil products of any kind or cooling water with additives containing oil.

Type 64 lilac

For aggressive exhaust air, flue gas and bulk materials.

Type 64 yellow

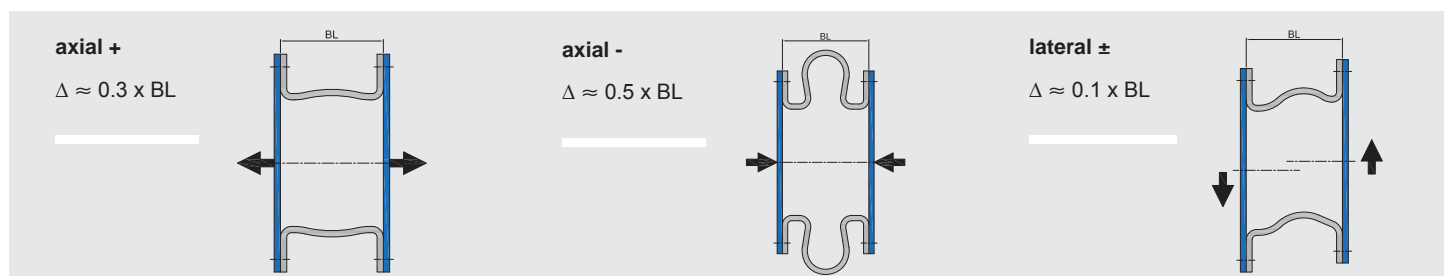
For air containing oils/fats, gases and bulk materials.

Type 64 grey (CR)

For air containing oils/fats, flue gases from treatment plants and bulk materials.

Note!

Detailed material descriptions on pages 5 - 7.



WILLBRANDT Rubber Expansion Joint Type 64

Bellows profiles

<p>Type 64-1</p> <p>Uncorrugated with straight ends for round or square versions</p>	<p>Type 64-2</p> <p>Corrugated with straight ends for round or square versions</p>
<p>Type 64-3</p> <p>Uncorrugated with flange connection for round or square versions</p>	<p>Type 64-4</p> <p>Corrugated with flange connection for round or square versions</p>

Cross-sections

<p>Cross-sections with straight ends for fixing clamps and mounting bars</p>	<p>Cross-sections for flange mounting</p>
---	--

Important information

For aggressive media, please see the resistance table (can be requested separately).
 The bellows should not be painted or insulated. Please note the installation instructions and tolerances as per the FSA Handbook (page 118) in the technical appendix!
 ++++ We will be happy to send you further information on the individual types and designs. ++++